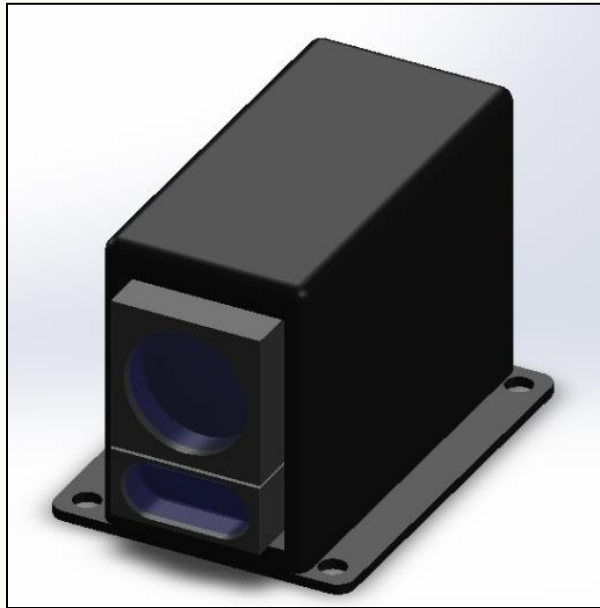


Ultra-Compact Long Range Laser Proximity Sensor Type: LPS-1000

Ultra-compact Laser Proximity Sensor Type LPS-1000 is a laser based distance measurement unit configured around an eye-safe semiconductor diode laser module. The sensor can be configured to generate a TTL/CMOS pulse at the output when the distance between the sensor and the target is in the programmed window. The sensor operates from 18 – 36 VDC or 9 – 16 VDC. Output TTL/CMOS pulse is available on a miniature co-axial connector.



Specifications

- **Type of Laser** : Semiconductor Diode Laser (Class-1)
- **Laser Wavelength** : 1550 nm (Eye-safe)
- **Maximum Measurable Range** : 1000 m
- **Range Measurement Update Rate** : 50 Hz (Every 20 ms)
- **Range Measurement Accuracy** : $\leq 1\text{m}$
- **Measurement Range Gate (Proximity Sensing)** : 0 – 1000 m (5 m increments)
- **Peak Power Consumption** : ≤ 2.5 Watts (Measuring)
: ≤ 0.05 Watts (Standby)
- **Life Time** : ≥ 10 million laser shots
- **Input Power** : 9 – 16 or 18 – 36 VDC
- **Dimensions** : 100 mm \times 70 mm \times 50 mm



Tek Xplore – An ISO 9001: 2015 & ISO 14001: 2015 Certified Company

Innovation and Excellence in Electronics and Optronics

Office Address: 403, Lusa Tower, A-2/3 Naniwala Bagh, Azadpur, Delhi-110033 (INDIA)
Tel. No.: +91-11-27672781, +91-11-45200579; **Fax:** +91-11-66173874
Website: www.tekxplore.com
Email id: info@tekxplore.com, support@tekxplore.com